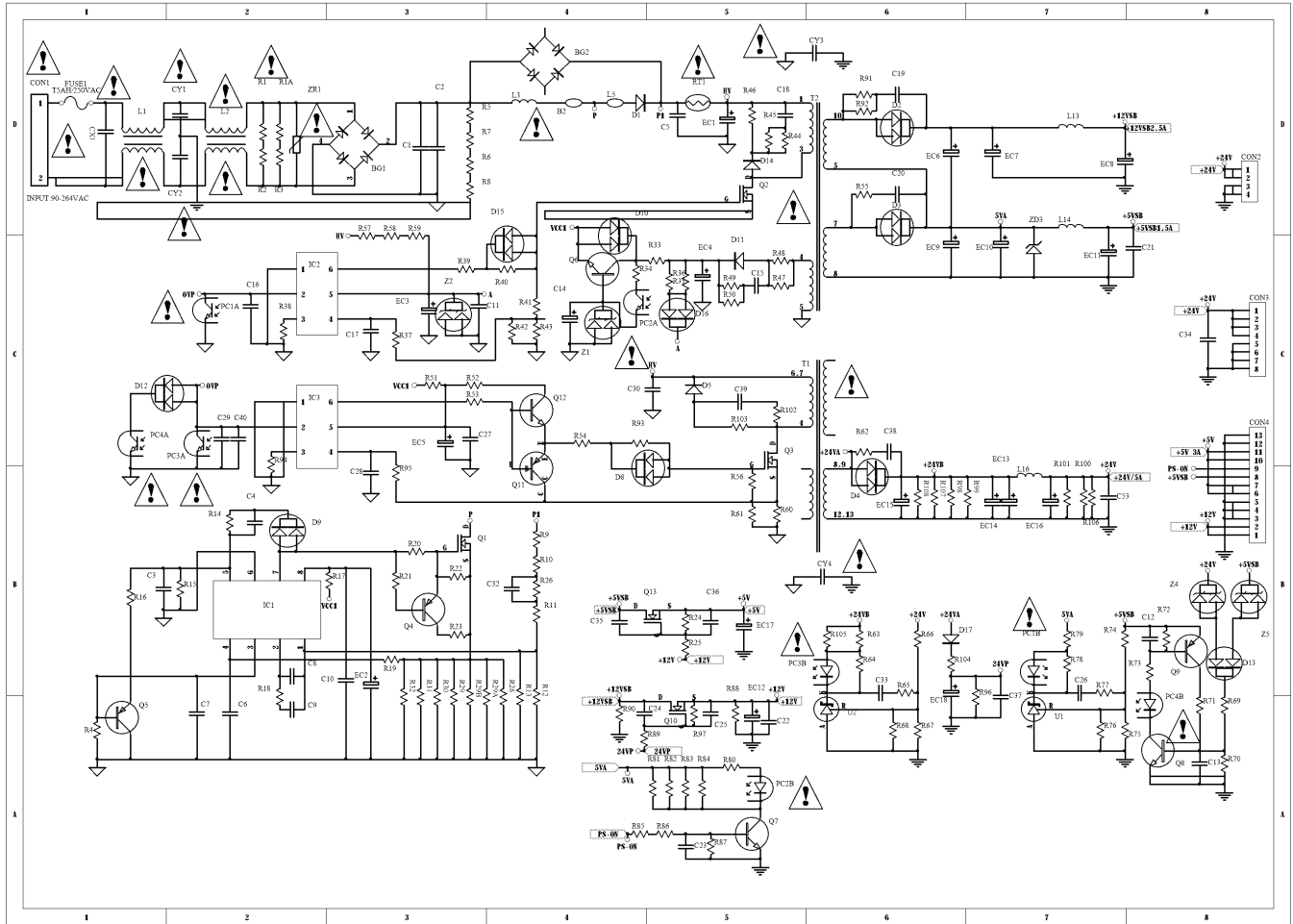
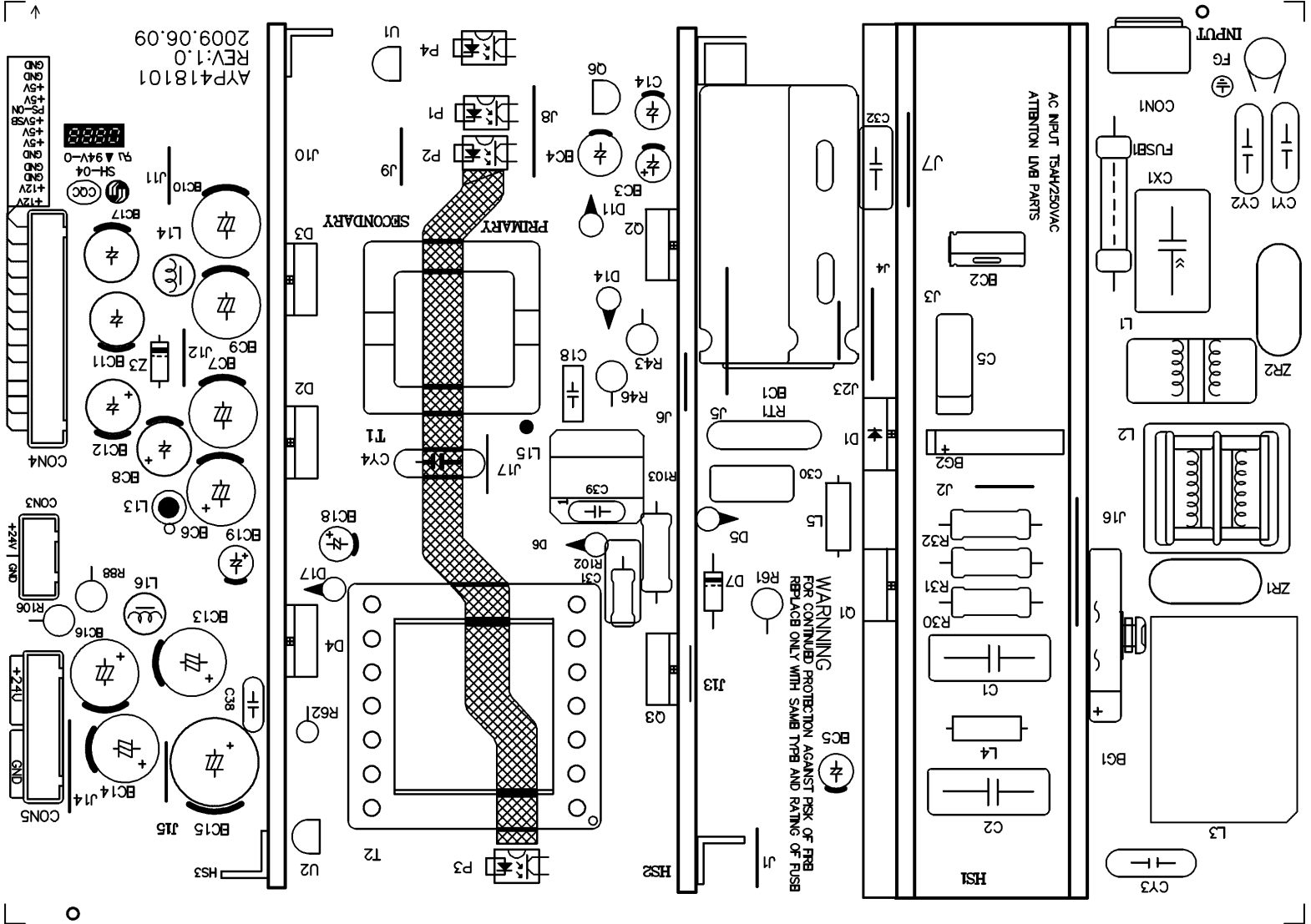


Power Board (SCH)

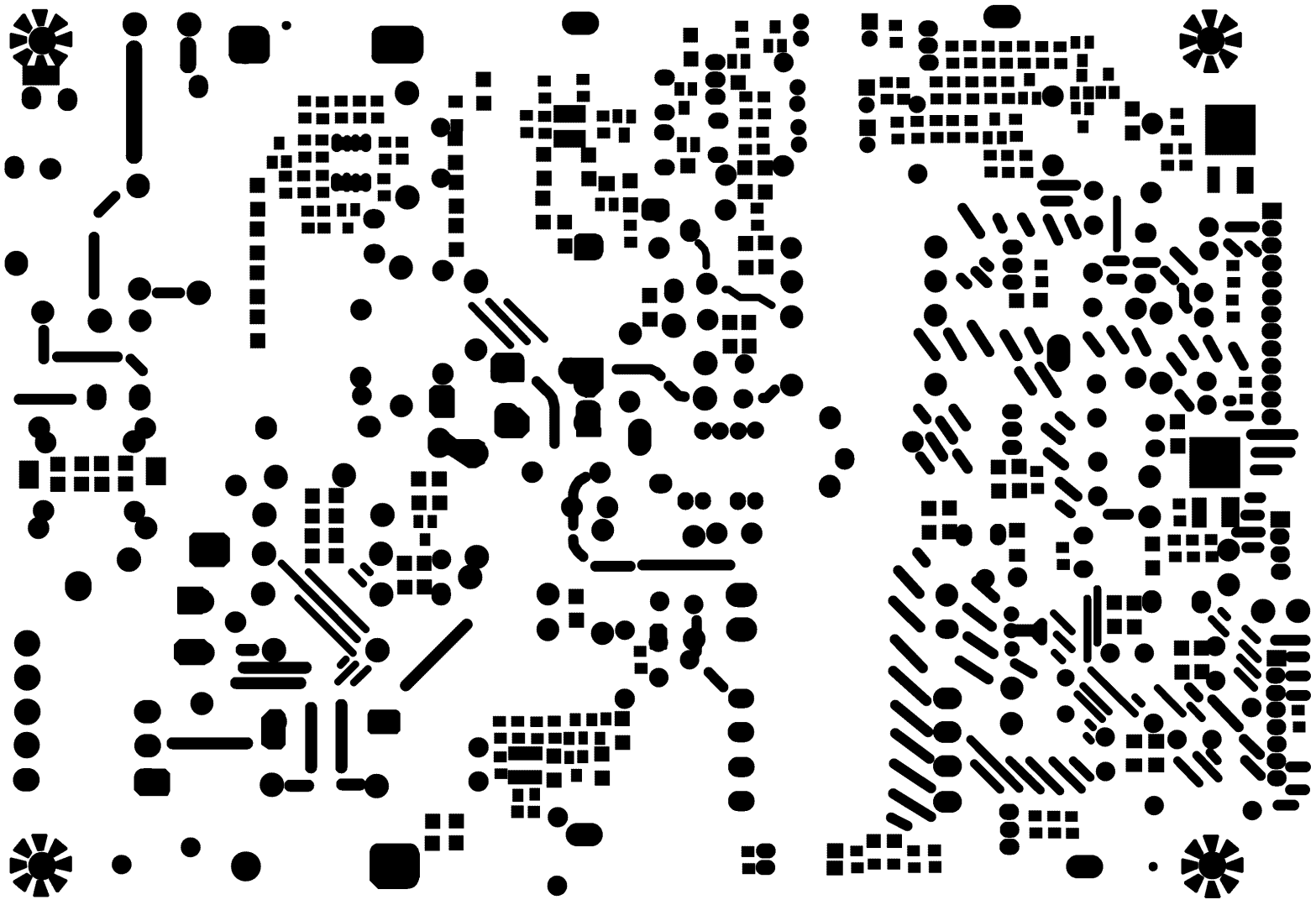


Power Board (PCB)

"HX" P054C042A<AYP418101-029 REV:1.0> CEM-1 1.6T 2009.0808 4PCS "S" 191.5*136MM <2010.0320>

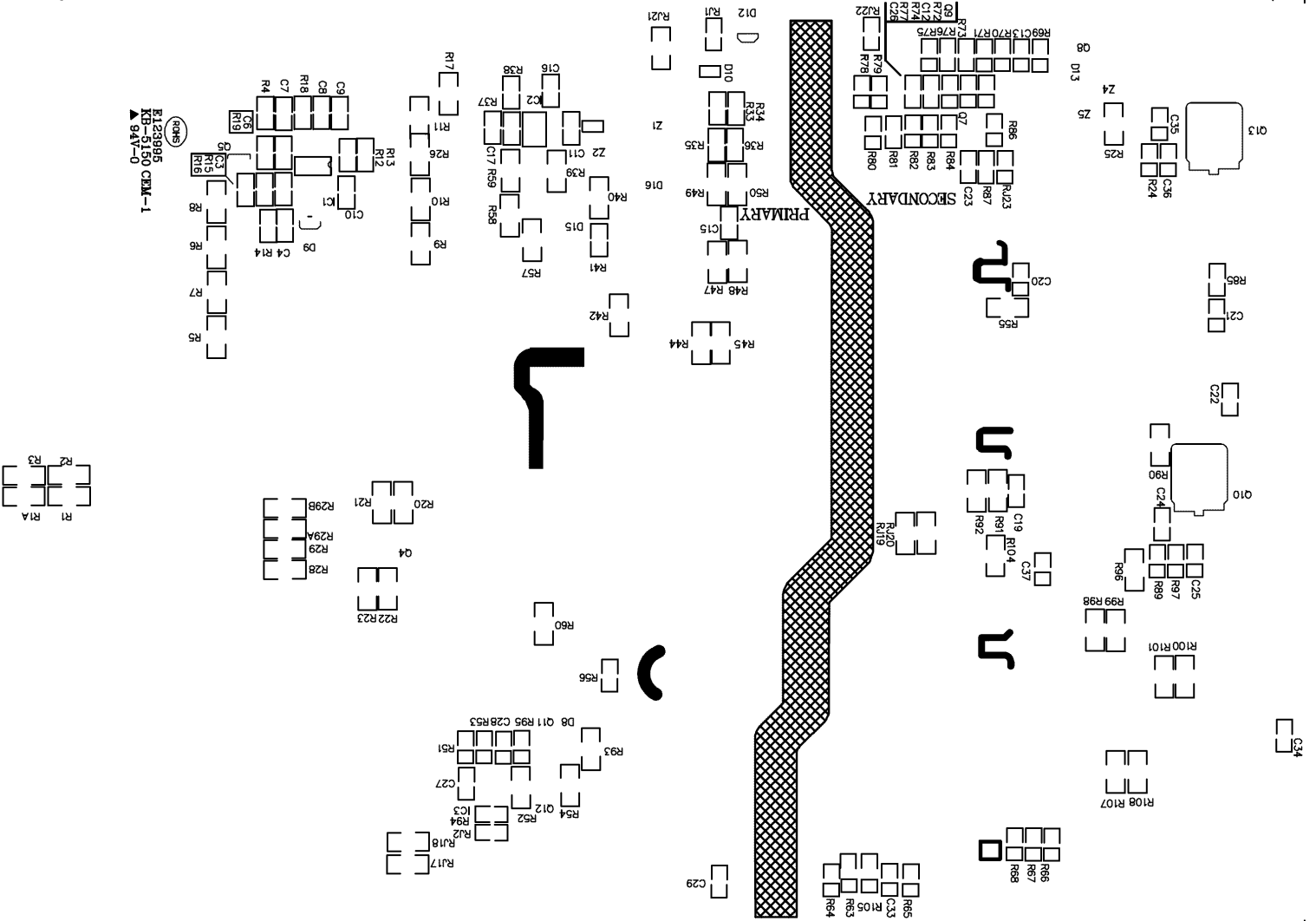


Power Board (PCB)

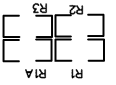


Power Board (PCB)

"HX" P054C042A<AYP418101-029 REV:1.0> CEM-1 1.6T 2009.0808 4PCS "S" 191.5*136MM

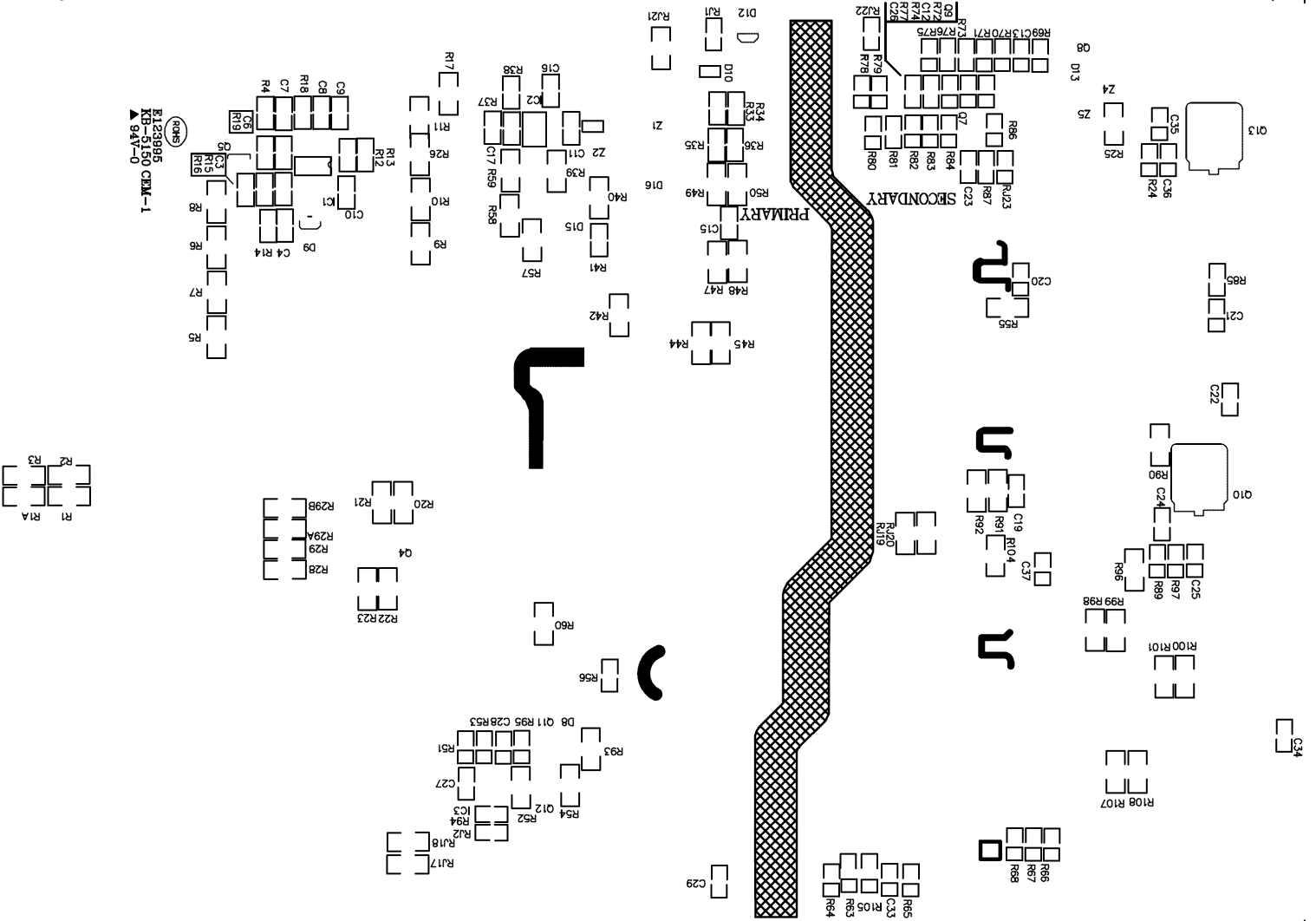


BI23905
R23905
▲947-0
CHMS

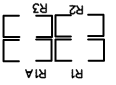


Power Board (PCB)

"HX" P054C042A<AYP418101-029 REV:1.0> CEM-1 1.6T 2009.0808 4PCS "S" 191.5*136MM



REVISIONS
REV:1.0
DATE: 2009.08.08
BY: AYP418101-029



Power Board (PCB)

"HX" P054C042A<AYP418101-029 REV:1.0> CEM-1 1.6T 2009.0901 4PCS "S" 191.5*136MM
AYP418101 REV:1.0

